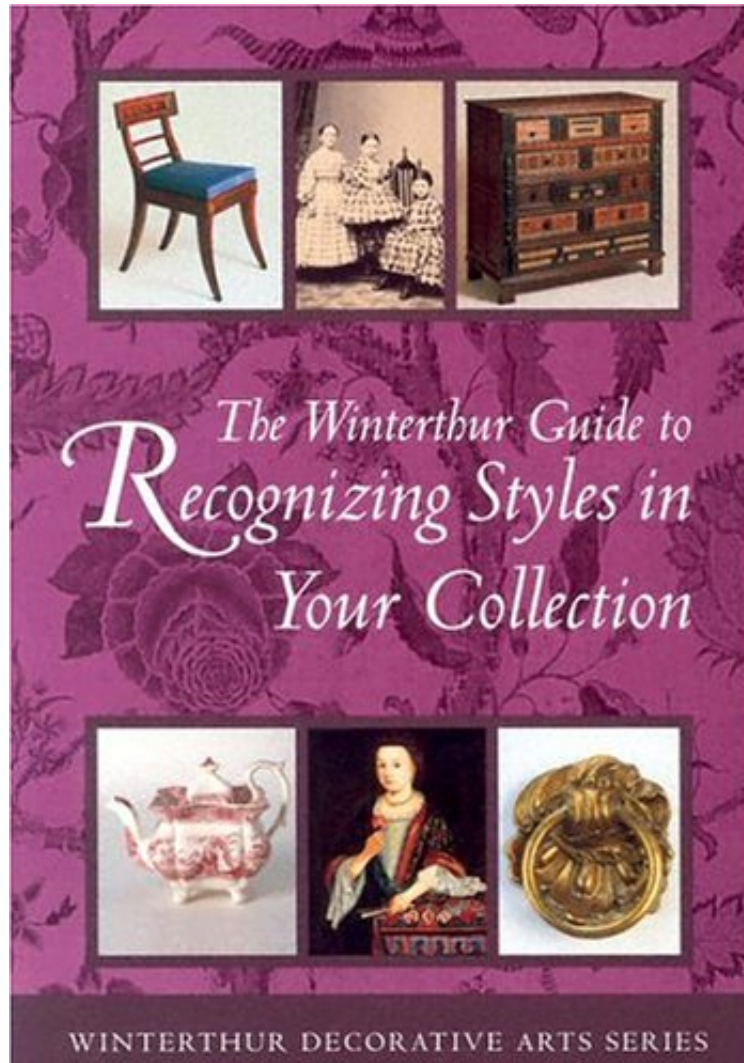


(Mobile pdf) The Winterthur Guide to Recognizing Styles: American Decorative Arts from the 17th through the 19th Centuries (Winterthur Decorative Arts Series)

The Winterthur Guide to Recognizing Styles: American Decorative Arts from the 17th through the 19th Centuries (Winterthur Decorative Arts Series)

Pauline Eversmann

*DOC | *audiobook | ebooks | Download PDF | ePub*



DOWNLOAD



+

READ ONLINE

#1477506 in Books 2001-12-01Original language:EnglishPDF # 1 .38 x 6.74 x 9.53l, .78 #File Name: 091272451X150 pages | File size: 69.Mb

Pauline Eversmann : The Winterthur Guide to Recognizing Styles: American Decorative Arts from the 17th through the 19th Centuries (Winterthur Decorative Arts Series) before purchasing it in order to gage whether or not it would be worth my time, and all praised The Winterthur Guide to Recognizing Styles: American Decorative Arts from the 17th through the 19th Centuries (Winterthur Decorative Arts Series):

0 of 0 people found the following review helpful. Great information!!By Rick UtleyI heartily recommend the full series from Winterthur. These books contain a good overview, and details I had not known before.0 of 0 people found the following review helpful. Five StarsBy Kathy FlemingExcellent book!0 of 1 people found the following review helpful. Guide of Decorative ArtsBy aknannyI thought there would be more antiques and folk art or items it was not what I had envisioned-It is an ok book just not what I was looking for

The third offering in the Winterthur Decorative Arts Series (which also includes *Evaluating Your Collection* and *The Winterthur Guide to Caring for Your Collection*), *The Winterthur Guide to Recognizing Styles* serves as an invaluable guide to identifying styles in the decorative arts. What distinguishes Queen Anne furniture from William and Mary? Not sure if your candlestick is Federal or Empire? What does Chippendale-style creamware look like? Illustrated in full color with objects from Winterthur's outstanding collection, this book answers these questions and more. Covering the years 1640 to 1860, it provides a road map for recognizing the defining characteristics of each period and understanding how styles have developed and changed over the years.

From the Publisher6 5/8 x 9 1/2 trim. 74 color illus. LC 2001-002664About the AuthorPAULINE EVERSMANN is the former Director of Academic Programs and Deputy Director of Public Programs at Winterthur.