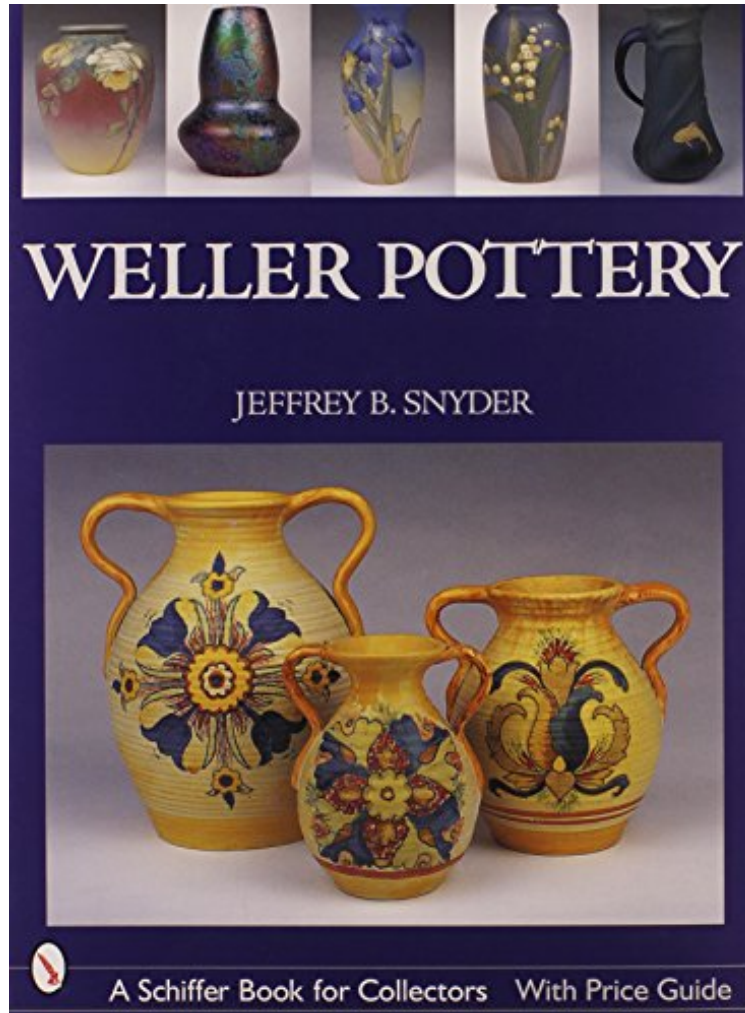


[Ebook free] Weller Pottery (Schiffer Book for Collectors)

## Weller Pottery (Schiffer Book for Collectors)

*Jeffrey B Snyder*

*ePub | \*DOC | audiobook | ebooks | Download PDF*



 Download

 Read Online

#2317525 in Books Schiffer Pub Ltd 2004-12-30 Original language: English PDF # 1 11.00 x 1.10 x 8.90l, 3.70 #File Name: 0764321862240 pages | File size: 76.Mb

**Jeffrey B Snyder : Weller Pottery (Schiffer Book for Collectors)** before purchasing it in order to gage whether or not it would be worth my time, and all praised Weller Pottery (Schiffer Book for Collectors):

0 of 0 people found the following review helpful. Pictorially informative By grannie annie Essential reference for Weller collectors 2 of 2 people found the following review helpful. Great Coffee Table Book By packratrev EXCELLENT color photos of the pieces listed make this a visually beautiful book. Set up in three sections as Weller's early, middle, and late periods, with pottery lines listed alphabetically within each section. Years produced and history are peppered throughout sections. Easy to get around if you are familiar with Weller. Index lists patterns and major shapes, but could do better listing by animal name, etc. The reason I rated it as only average is that only a few pieces of each pattern are listed, and are not always listed together if they cross the time sections used. Going through ebay, I'm lucky to find one out of ten pieces to try to price. If you are hoping to use this as a pricing guide it is missing too many

pieces. The prices that are listed seem to be pretty close, though. Overall a very pretty and informative book as long as you're not looking for a comprehensive pricing guide. 0 of 3 people found the following review helpful. **WELLER POTTERY TIME LINE** By Arthur N. Brown Weller Pottery 1872-1948 Fultonham Zanesville Ohio Weller Timeline April 12, 1851 Samuel Augustus Weller born in Ohio 1872 Operates a one-man pottery in Fultonham, near Zanesville in Muskegeum County, Ohio 1882-1890 Expansion to Zanesville, followed by building, buy-outs until 1931 when the Depression forces consolidation and down-sizing 1893-1896 William Long's Lonhuda ware, Louise Weller and Louwelsa born, 1896 1897 Henry Schmidt develops Weller Turada, the first squeezebag pottery line in the Ohio valley, Owens Pottery introduces similar Cyrano line in 1898 1895-1904 Charles Upjohn heads Weller decorating department, develops Dickensware II in 1900 1902-1907 Jacques Sicard at Weller, Sicard line appears in the fall of 1903; (Clement Massier Reflets Metalliques by 1889) 1902-1905 Weller becomes world's largest pottery and maker of mass produced Art Pottery 1903-1904 Frederick Hurton Rhead at Weller, develops Jap Birdimal line in 1904, becomes Roseville's first art director in 1904, leaves Roseville in 1908 1904 Weller has huge display at the St. Louis Exposition 1908 Rudolph Lorber develops Dechiwo, 1908, which leads to Burntwood, Claywood, and others 1917 Weller Hudson family introduced 1916-1929 Rudolph Lorbor develops Brighton birds, Muskota, Woodcraft, Forest, Glendale and other great naturalistic lines, ending with Coppertone, 1929. Dorothy England Laughead creates Silvertone, Chase, and the Garden Animals 1920-1924 John Lessell heads the decorating department, develops luster glaze lines including LaSa, Marengo, Cloudburst, Lamar, others July 1, 1922 Weller Pottery incorporated as "S.A. Weller, Inc." October 4, 1925 Samuel Augustus Weller dies 1925-1932 Nephew Harry Weller takes over as president, introduces continuous kiln, consolidates plants in 1931 due to Depression, dies in auto crash in 1932 1930-1932 Last freehand decorated lines introduced at Weller: Stellar, Geode, Cretone, Raceme, Bonito 1932-1937 Frederic Grant, son-in-law, is president for one year, divorced from Ethel (Weller, b. 1898); Irvin Smith, another son-in-law (Louise) is president from 1933-1937 1935 Freehand decoration ends at Weller 1935-1948 Weller produces simplified embossed lines 1937-1948 Walter Hughes, a ceramic engineer and former employee at American Encaustic Tiling Company is Weller's last president 1947-1948 Essex Wire Corporation buys controlling share in Weller, closes the pottery in 1948 1954 Minnie Weller dies at age 92, Weller house contents are auctioned **ALSO STRONGLY RECOMMEND COLLECTOR'S ENCYCLOPEDIA OF WELLER POTTERY FOR GREAT PICTURES AND HISTORY.**

One of the early twentieth century's most prolific potteries, the S.A. Weller Pottery Company, of Zanesville, Ohio, produced art pottery and artwares reflecting the major art movements of the day, including Arts and Crafts, Art Nouveau, and Art Deco. Here, over 520 striking color images display the broad array of wares produced by Weller from 1895 to 1948, including such well-known lines as Art Nouveau, Aurelian, Coppertone, Dickens Ware, Eocean, Forest, Hudson, Louwelsa, Sicard, and Woodcraft. This sweeping survey includes a sampling of hand decorations by many of the company's respected artists and also illustrates the highly varied, innovative glaze treatments employed over the years on a wide range of decorative items. The carefully researched text includes a history of the firm, a fascinating review of how changing art movements and public demands influenced the pottery, a detailed bibliography, helpful listing of all known Weller line names, and complete index. Values for the wares displayed are found in the captions. An essential reference for Weller enthusiasts and all who are passionate about ceramics!

About the Author Jeffrey B. Snyder is an experienced author, editor, and photographer who has spent years studying and writing about the past two hundred years of ceramics history and development.